

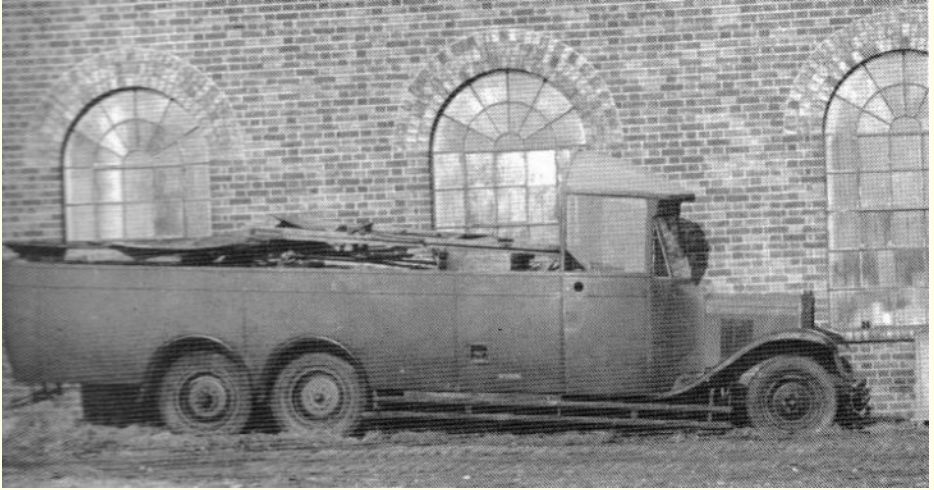


## Provincial Service Vehicles



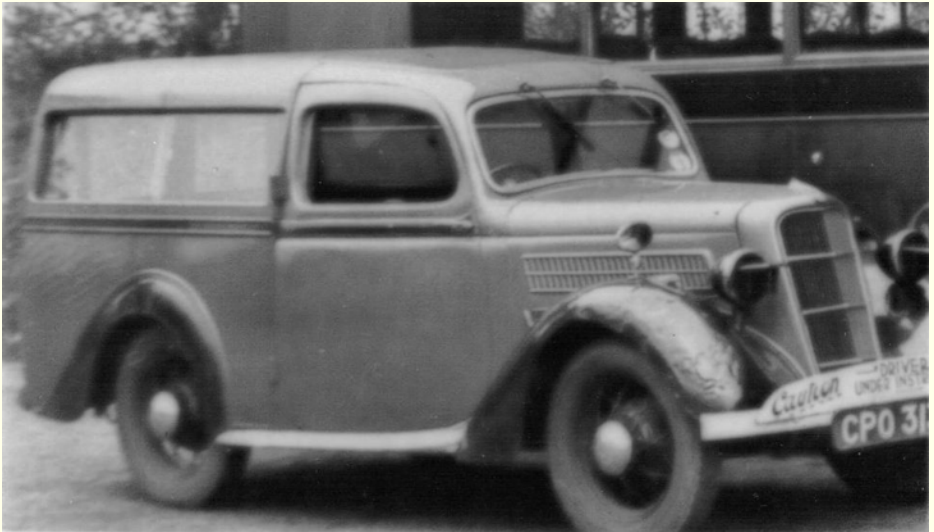
## Provincial Bus Community





*After withdrawal in 1936, Chevrolet 19 (OU 3715) was demoted to a lorry as seen here at Hoeford.*

**Photo: Bob Gray Collection**



*CPO 313 Ford 10 based estate car which was in use from early 40's until replaced by a Thames pickup in 1958. Perhaps Provincial produced the bodywork. This photo was taken in 1942.*

**Photo: David Whitaker**



*This Chrysler Six dating from 1934 was the personal transport of Orme White's father H L White. In later years it was used as company transport for office and other staff and was used regularly to take huge quantities of copper coinage to the bank at Fareham.*

***Photo: David Whitaker (who can be seen in the back seat !)***



*The Ford Thames pickup as delivered in November 1958. This photo shows the beautiful Provincial livery, but the number plates, UOR 827, are yet to be attached.*

***Photo: David Whitaker***



*The Ford Thames pickup UOR 827 in company with withdrawn AEC Regent 11 (FHO 603) at Hoeford. This little van was frequently seen around Fareham and Gosport in the 1960s.*

**Photo: Fred York**



*A rare view of UOR 827 'in action' as it comes to the aid of broken down Regent 10 (FHO 602) in the approach road to Fareham BR station c.1967. Behind can be seen a Southdown PD3, the Southdown dormitory shed was just out of shot. The old Twilfit corset factory can also be seen in the background.*

**Photo: Stephen Didymus collection**



667 FMW, a 1955 Ford Thames with Mann Egerton crane, which Provincial purchased from the Perivale Motor Company in 1968. This photo at Hoeford was taken on January 31, 1973.

**Photo: Stephen Didymus**



UOR 827s replacement in 1969 was a BMC J2 pickup SOR 192G. Photos of this vehicle have proved elusive, but its nose can be seen peeping from behind Seddon No. 50 (MHO 197F) at Hoeford.

**Photo: Cliff Essex**



*A Leyland Sherpa from the NBC era.*

*Photo: Stephen Didymus Collection*



*Transit van C673 COR at Hoeford in June 1993.*

*Photo: Stephen Didymus collection*



*Ford Transit pick-up truck F704 NBB in Fareham Bus Station in the early 1990s.*

***Photo: Stephen Didymus***



*A Volvo F86 recovery vehicle also from NBC days. Photo: Stephen Didymus Collection*

## Driver Training Vehicles

Here is a selection of driver training vehicles used by Provincial.



*Until 1972, Provincial didn't have a dedicated training bus, so various vehicles were used in this role. Buses and other large vehicles, including 61 (EHO 966), on driver training duties, had to weave their way under the narrow railway arch at Fareham station on 18 June 1965 .*

**Photo: Fred York**



*21 (FCR 442) on learner driver duties in Fareham.*

**Photo: Fred York**



*Driver trainer T1 (HWO 344) on a lovely summer's day in Winchester on June 28th 1974.*

**Photo: Colin Caddy**



*Two of the Hants & Dorset trainers, XPM 48 and YRU 65, together at Hoeford c.1978. XPM 48 was new to Brighton Hove and District.*

**Photo: Bob Gray**



Although ex Southdown 'Queen Mary' 202 (WOW 993T) was the regular training vehicle for People's Provincial, this was sometimes augmented by one of the former Eastbourne Atlanteans as seen here with 212. **Photo: Peter Davey**

